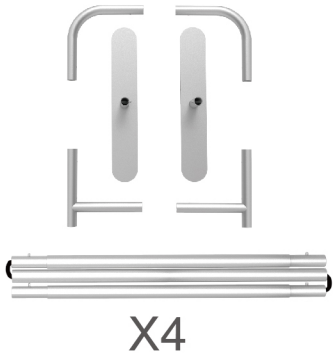


## PARTS

(1) Hardware

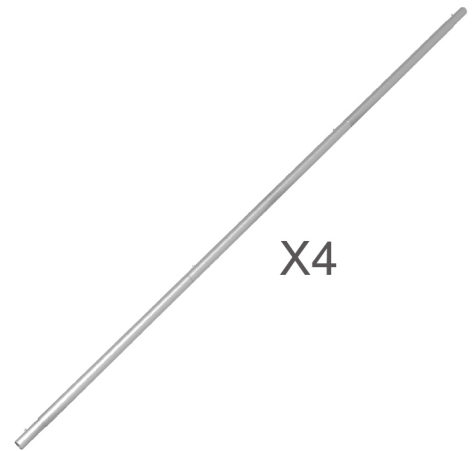
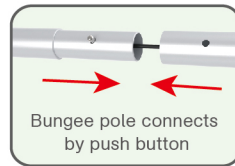


(2) Graphic printing fabric banner



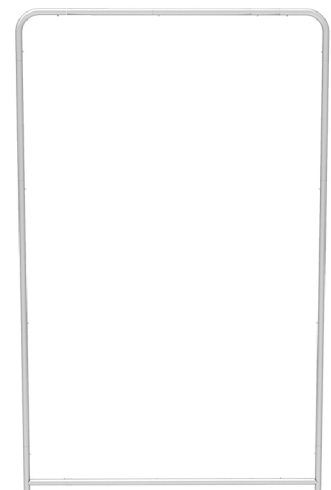
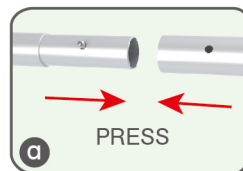
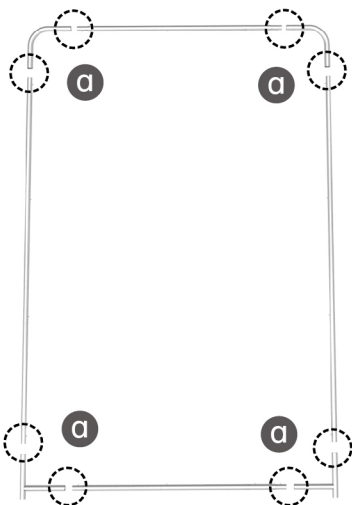
### STEP 01

To connect the poles according to the labellings



### STEP 02

Connect the support poles.



## PARTS

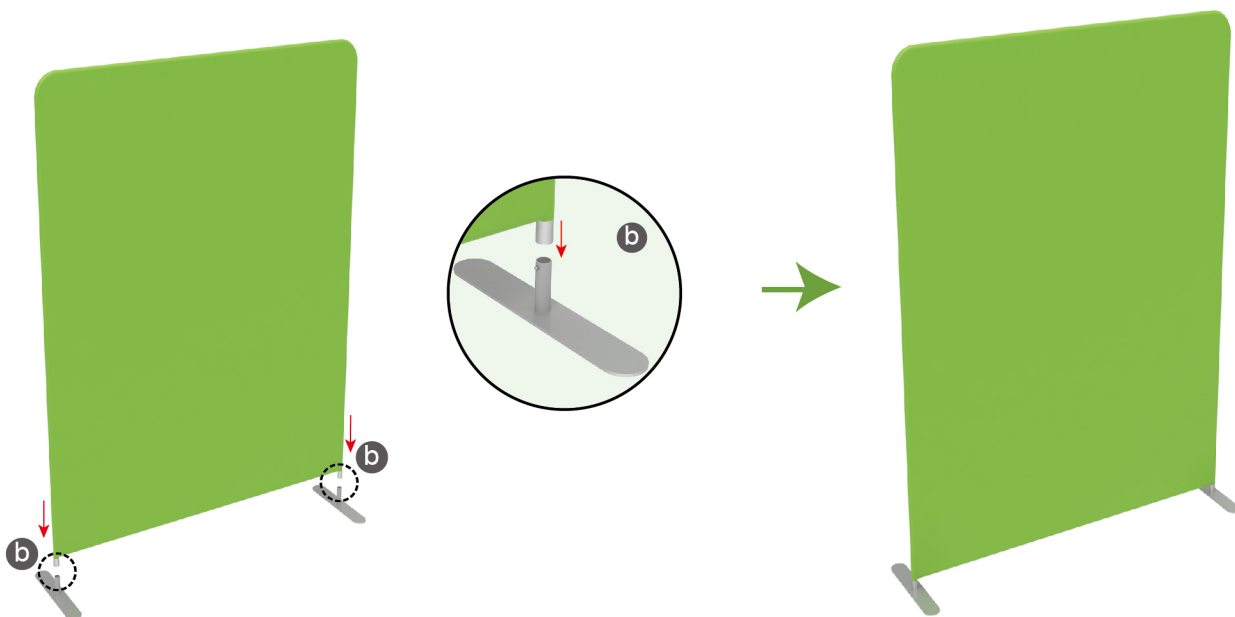
### STEP 03

To slide the fabric banner on the frame from top and zip up at bottom



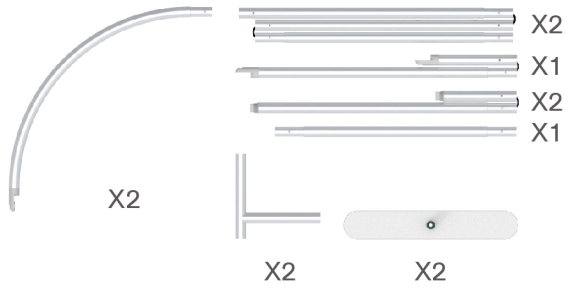
### STEP 04

To assemble the stand feet in position



## PARTS

(1) Hardware

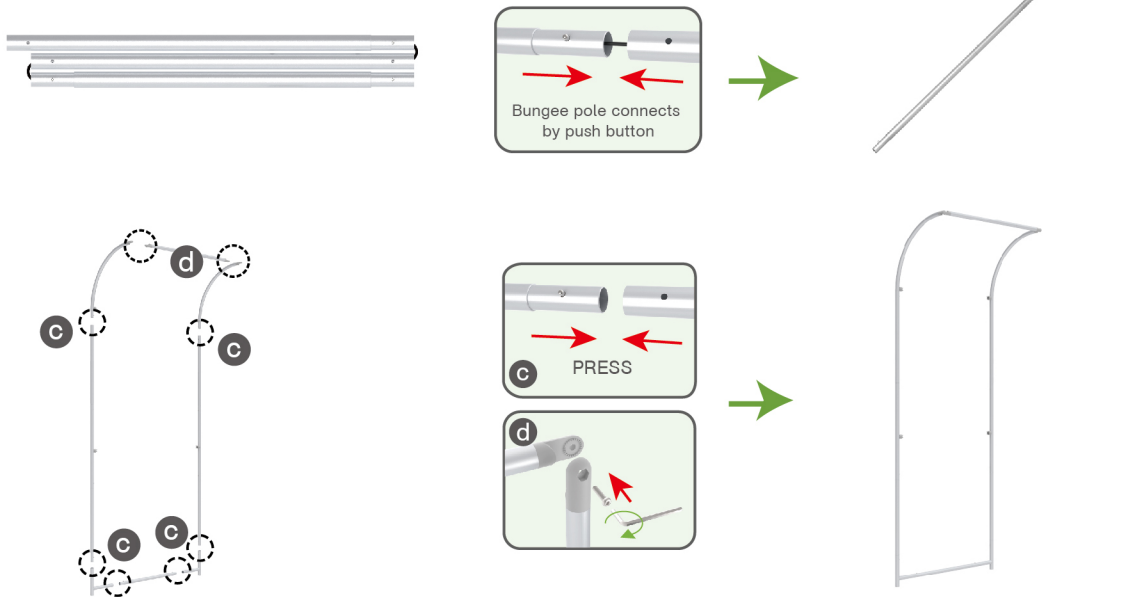


(2) Graphic printing fabric banner



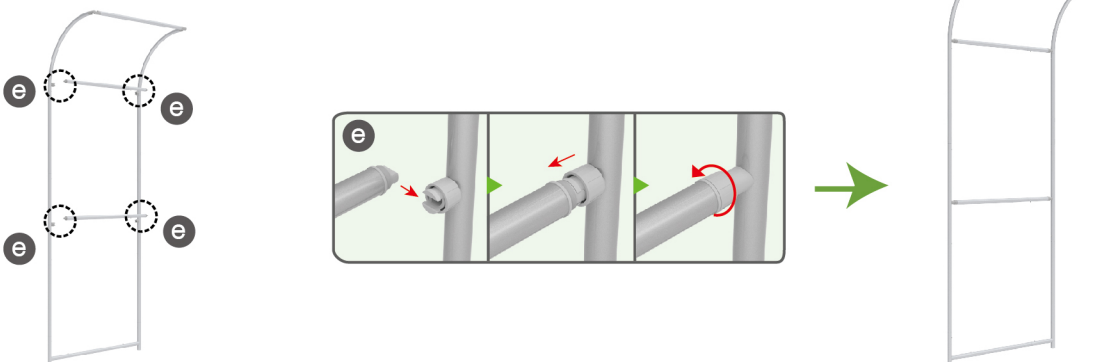
### STEP 01

To connect the poles according to the labellings



### STEP 02

To install the cross bar in position



## PARTS

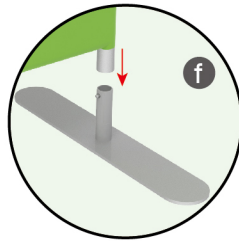
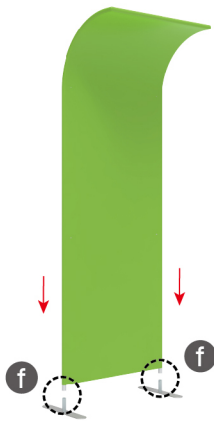
### STEP 03

To slide over the fabric banner from top to bottom and zip up



### STEP 04

To assemble the stand feet in position





## PARTS

(1) Hardware

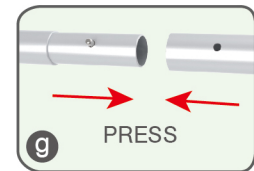
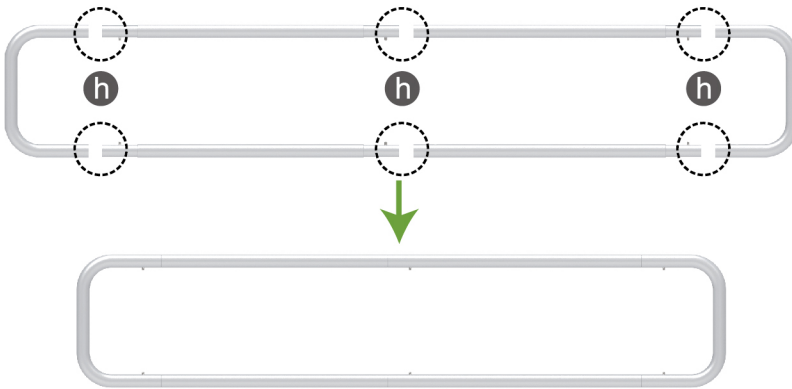


(2) Graphic printing fabric banner



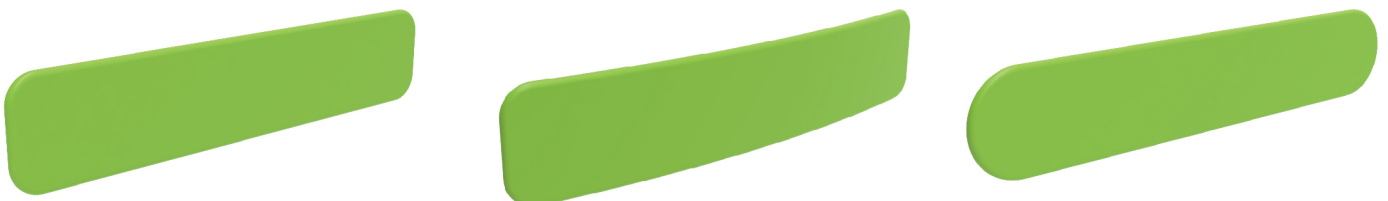
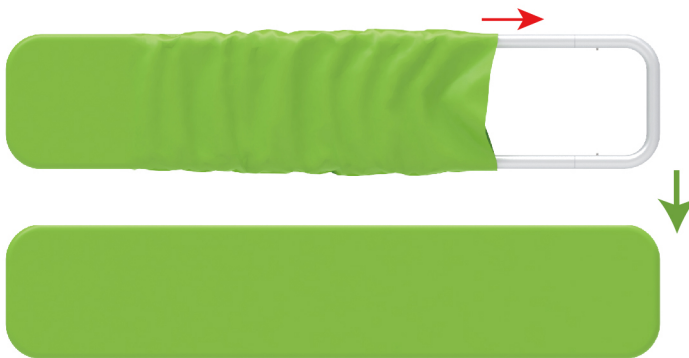
### STEP 01

To connect the poles according to the labellings



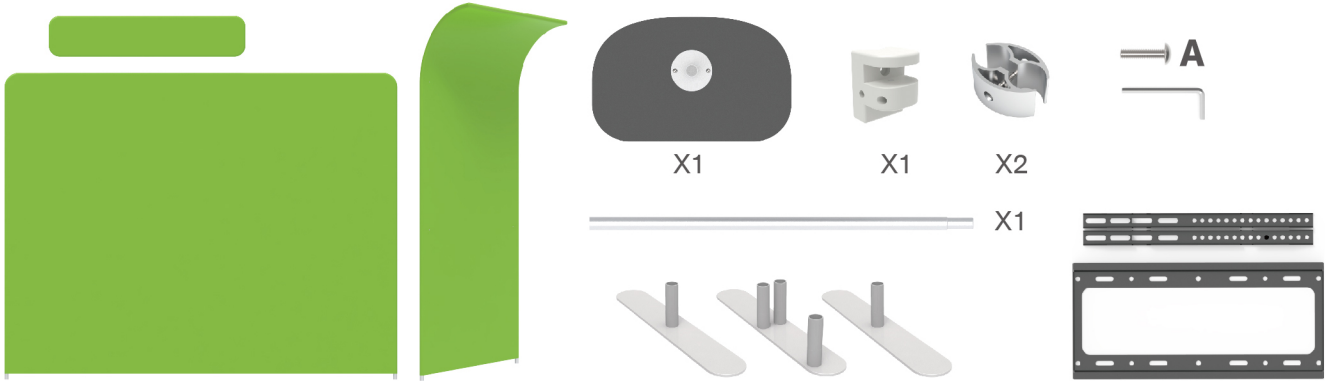
### STEP 02

To slide the fabric banner on the frame from side and zip up at side



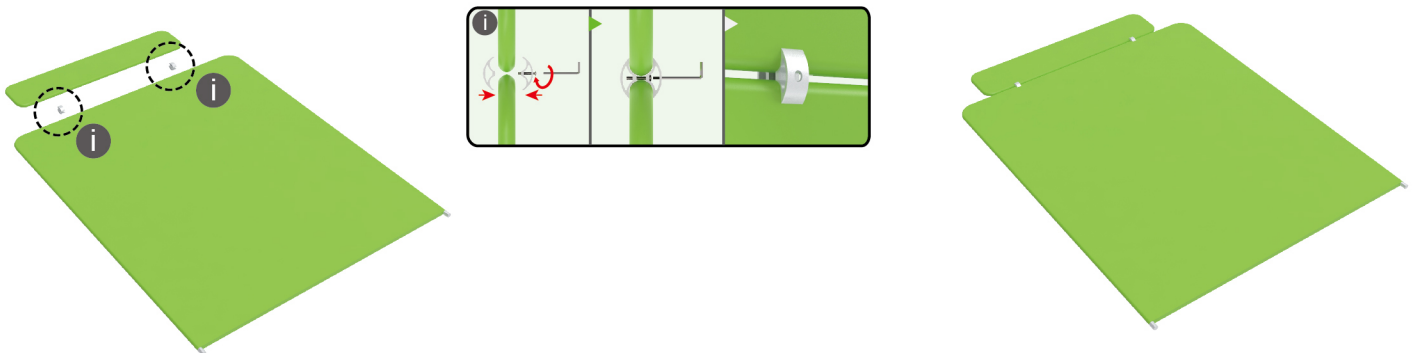
## PARTS

### Booth Set Assembly



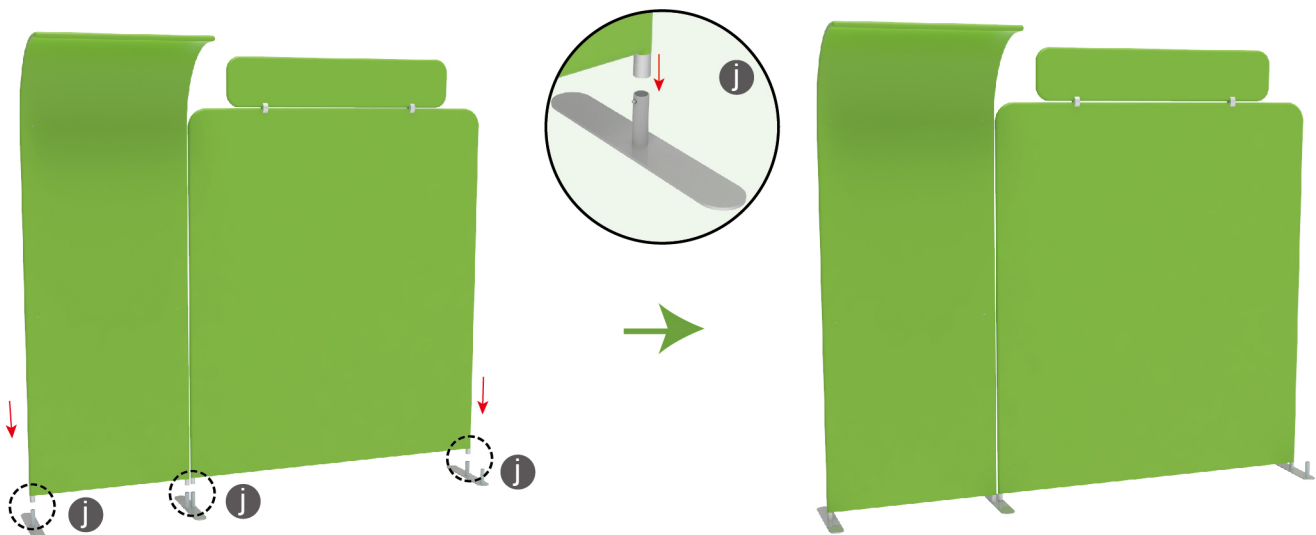
#### STEP 01

Lie down the back wall and install the header by using C clip



#### STEP 02

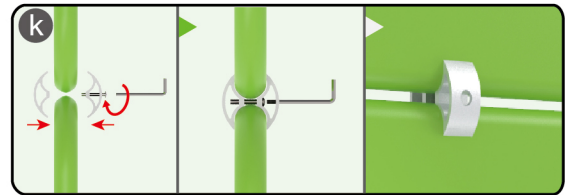
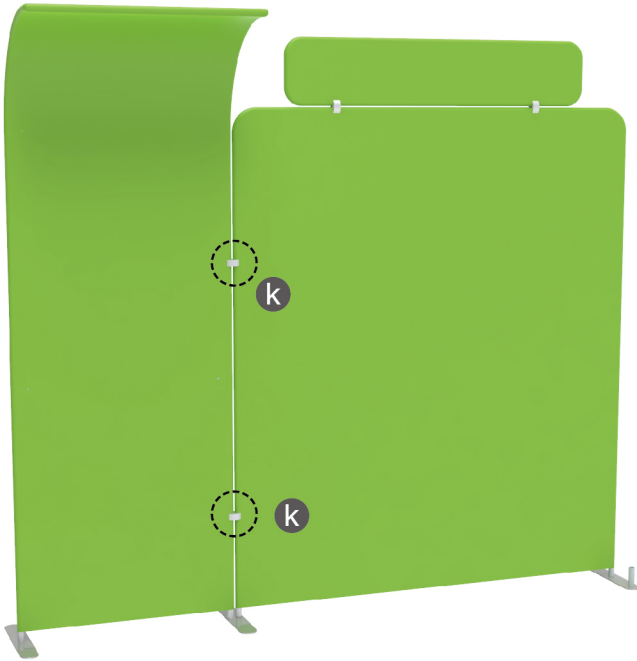
To install the backwall base in position to make the backwall stands together



## PARTS

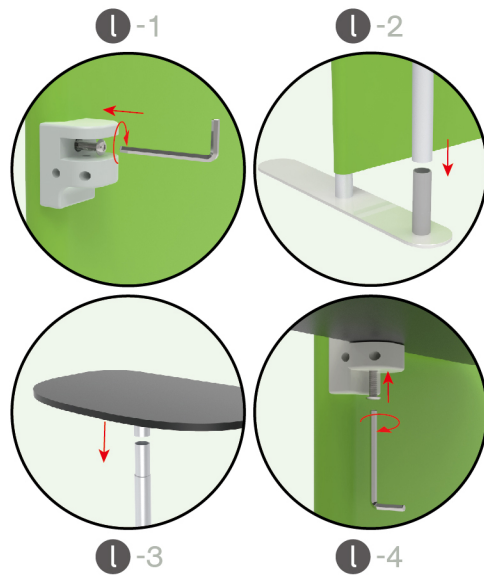
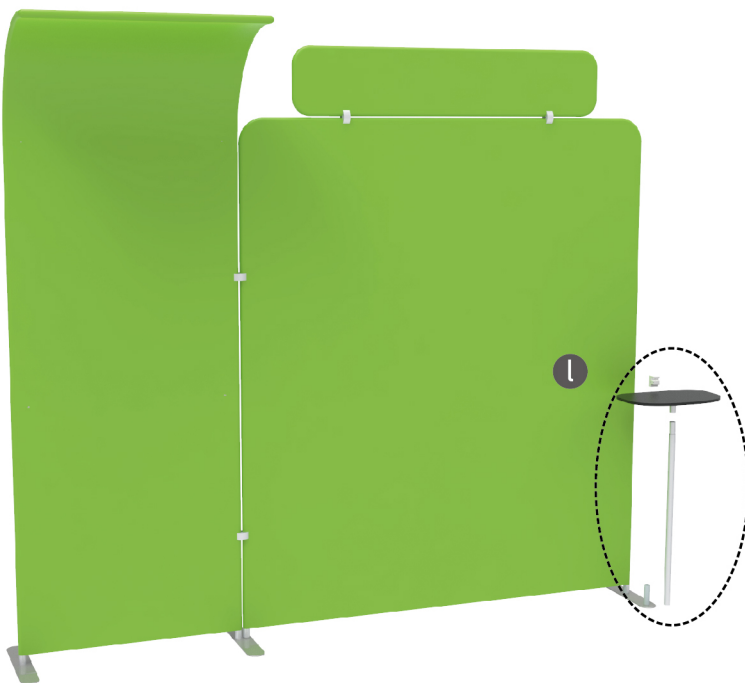
### STEP 03

To use C clip to make 2 backwalls connect perfectly



### STEP 04

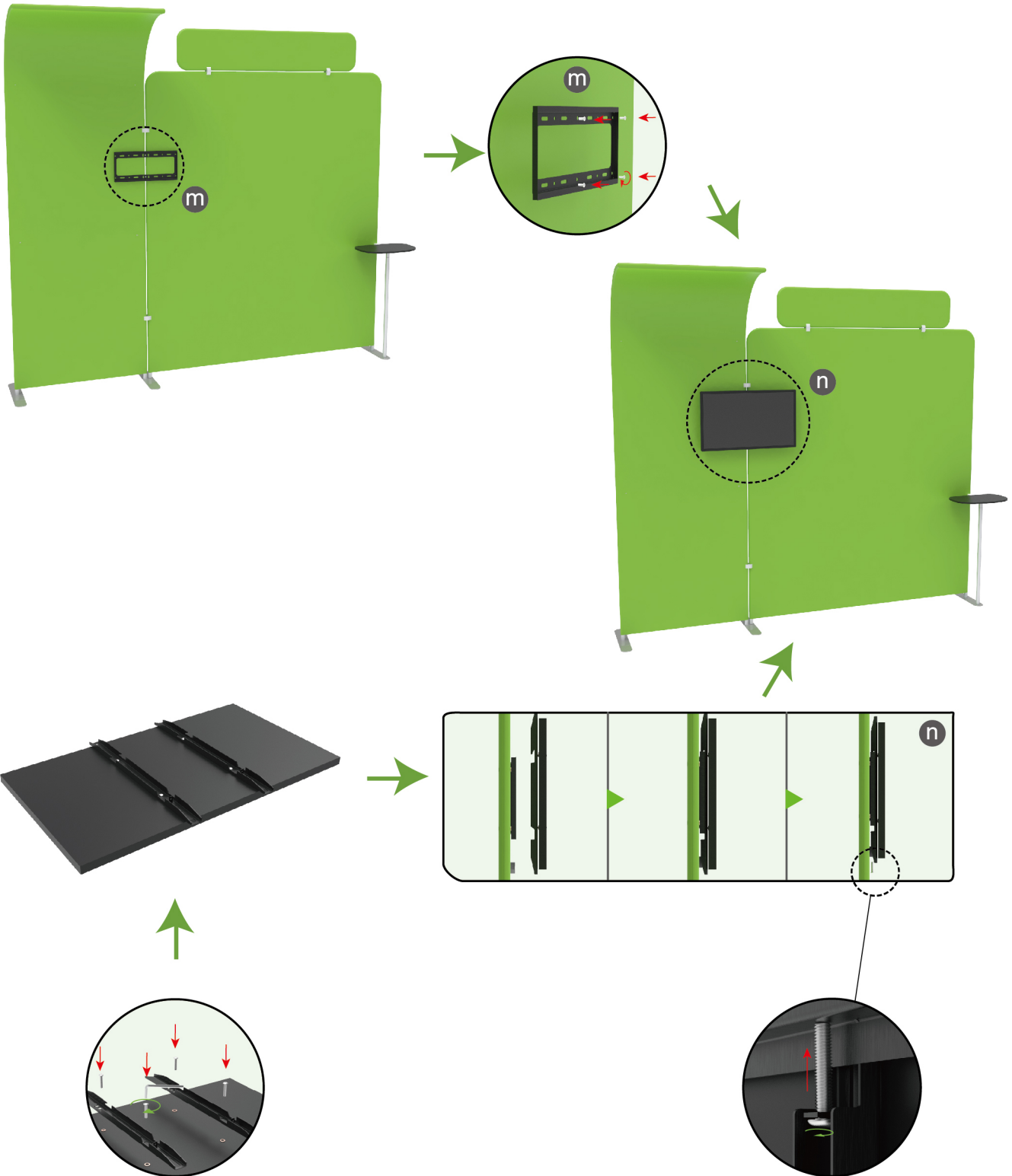
To install the shelf in position



PARTS

STEP 05

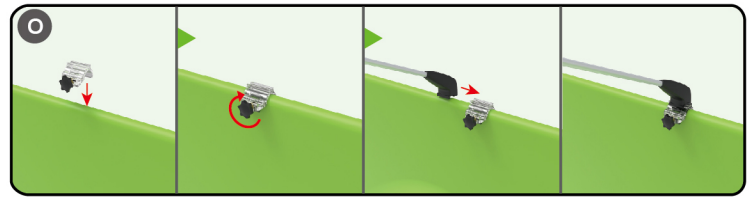
To install the TV mount in position



## PARTS

### STEP 06

Install LED light



10X10ft-Booth-16