

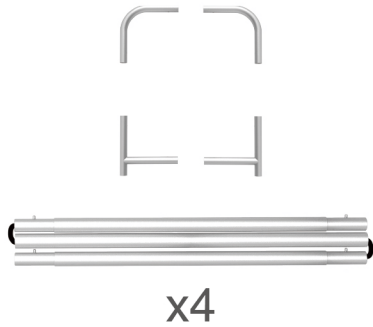
# INSTRUCTION



**10X10FT-BOOTH-U**

## STEPS

(1) Hardware

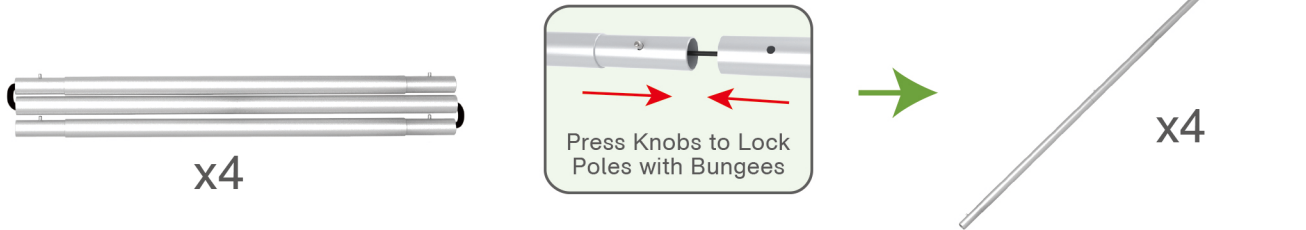


(2) Printed Graphic Fabric Banner (Optional)



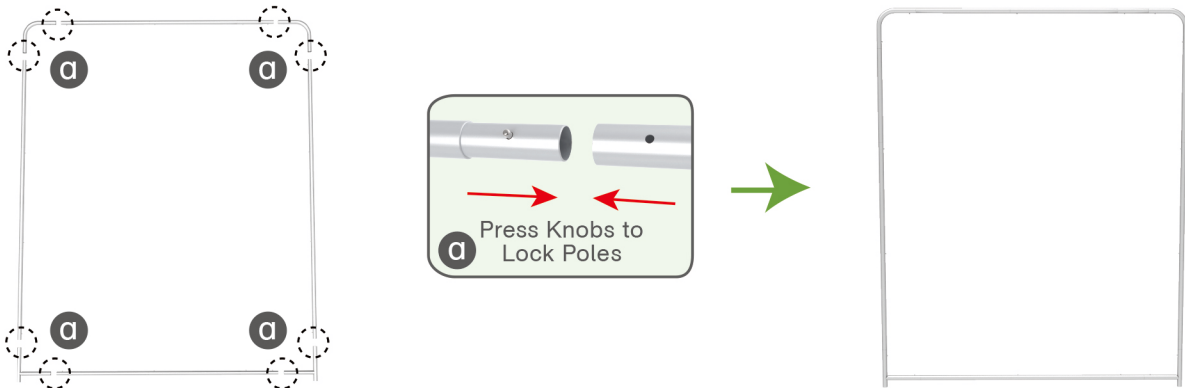
### STEP 01

Connect to make long poles according to labelings.



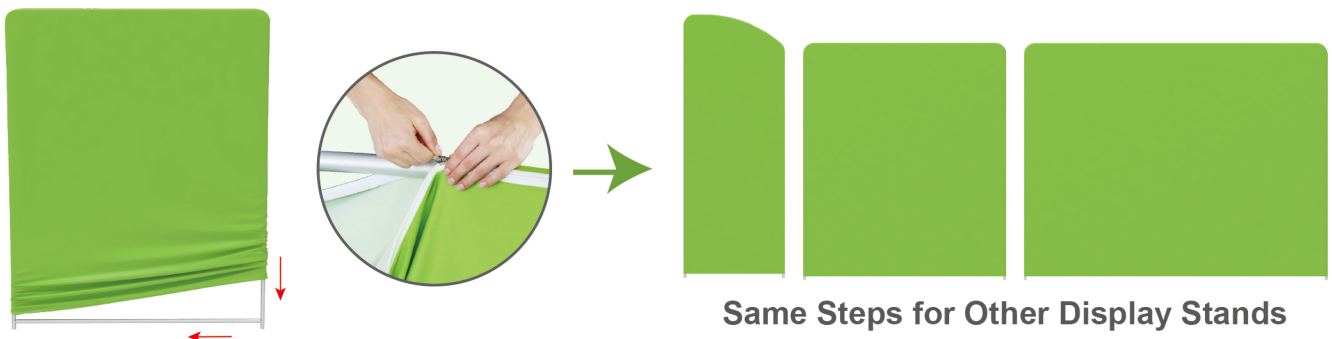
### STEP 02

Connect long poles with corner poles according to labelings.



### STEP 03

Slide fabric banner on frame from top and zip up at bottom.



## STEPS

(1) Hardware

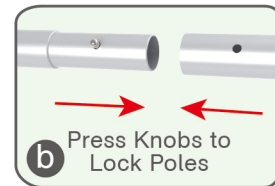
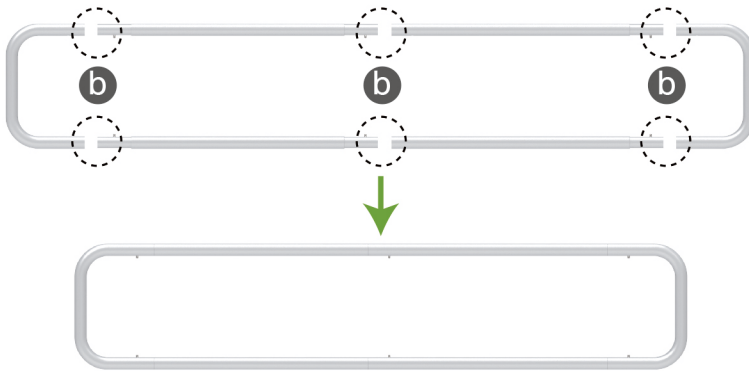


(2) Printed Graphic Fabric Banner (Optional)



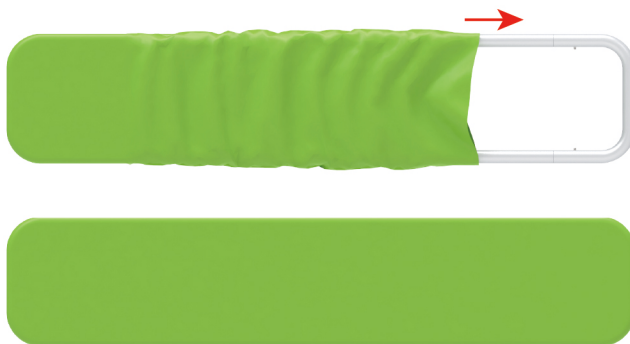
### STEP 01

Connect poles according to labelings.



### STEP 02

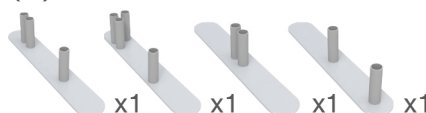
Slide fabric banner on frame from left and zip up at right.



## Booth Set Assembly



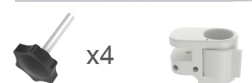
(1) Base



(2) 180° C-Shaped Clip & 90° C-Shaped Clip



(3) Shelving Board



(4) LED Light & Clip



(5) TV Mount

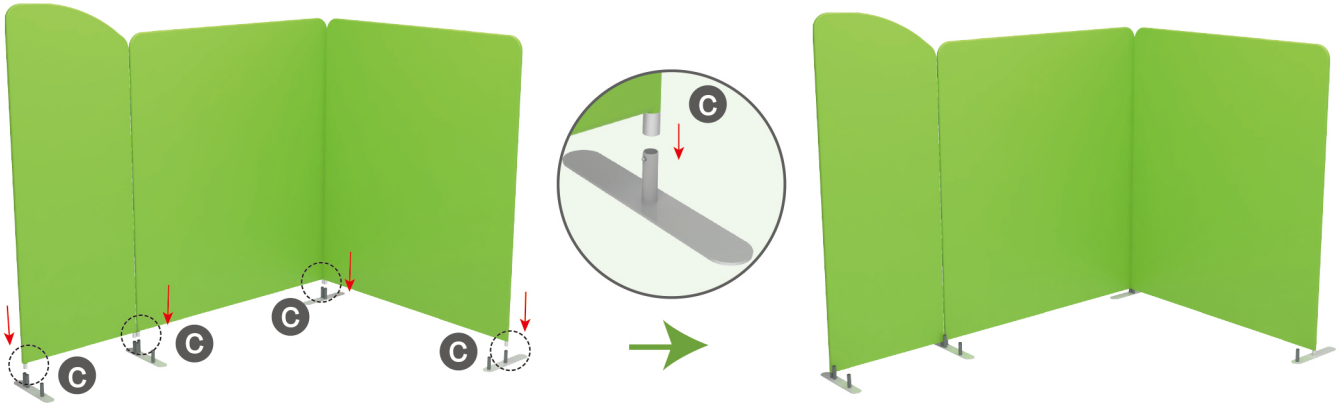


(6) MDF Board Table

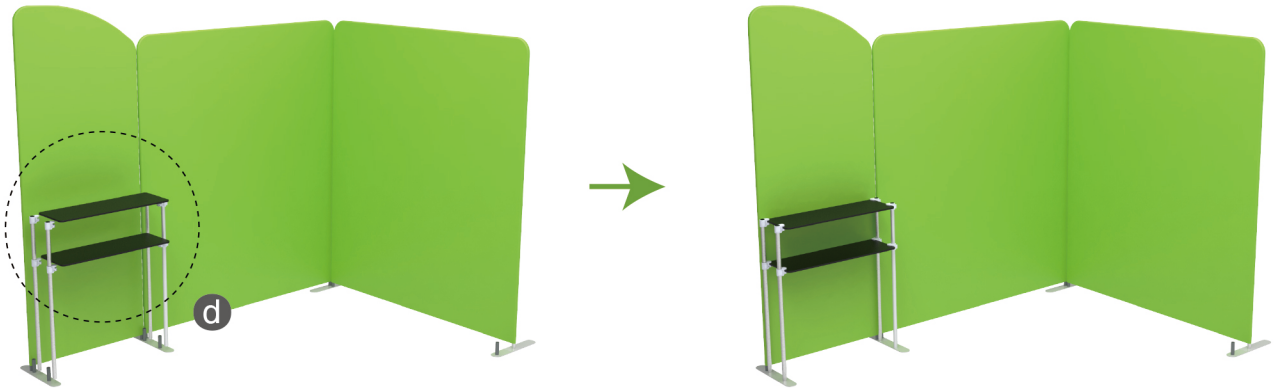
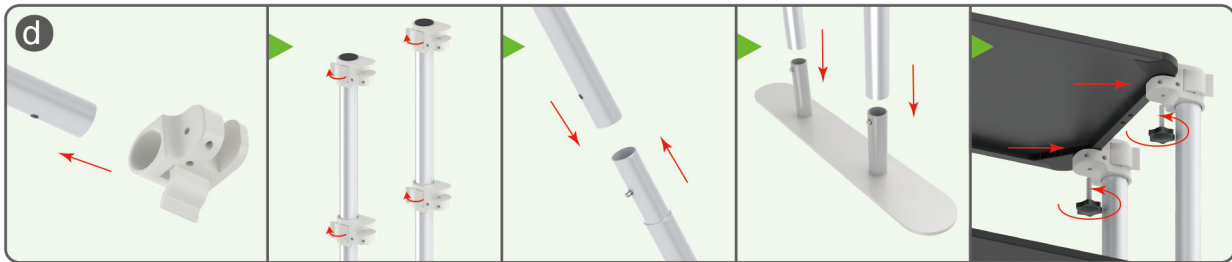


## STEPS

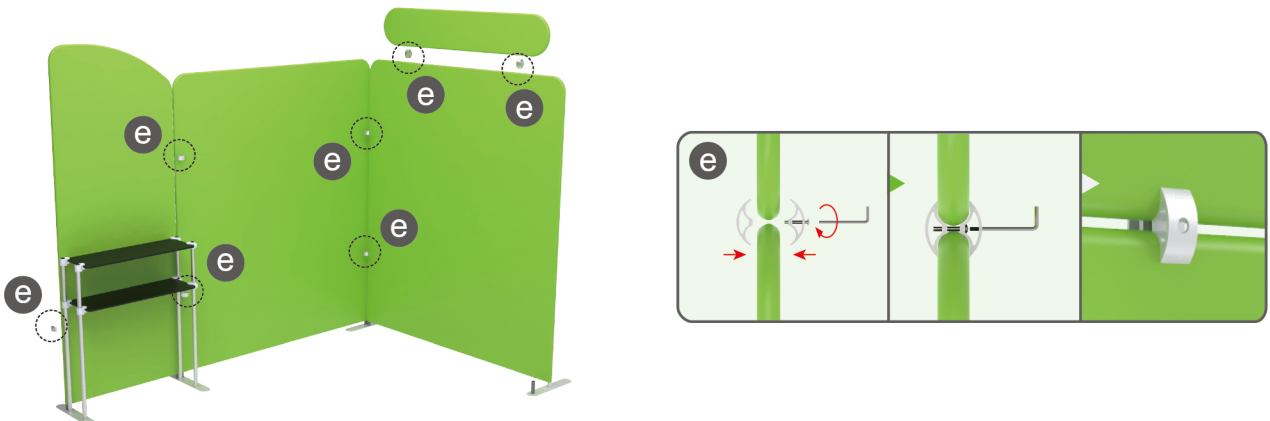
**STEP 01** Insert display stands onto feet by pressing their knobs.



**STEP 02** Install shelving boards in position.



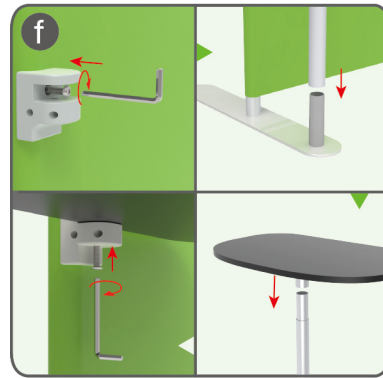
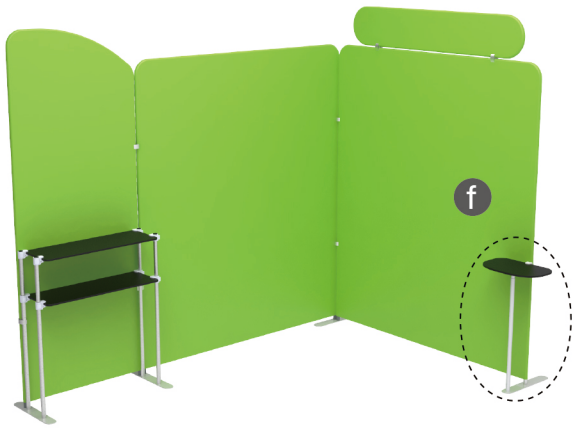
**STEP 03** Interconnect display stands with C-shaped clips.



## STEPS

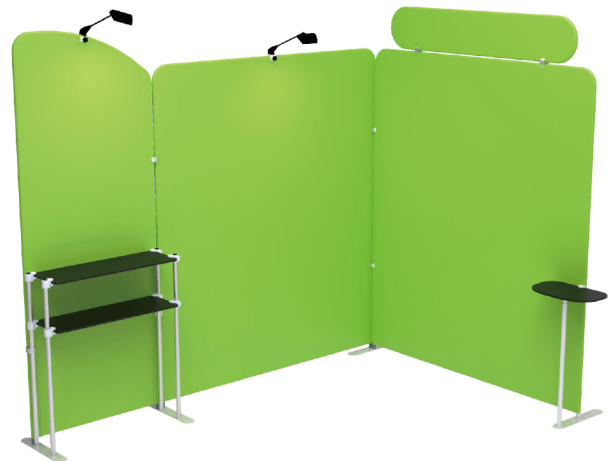
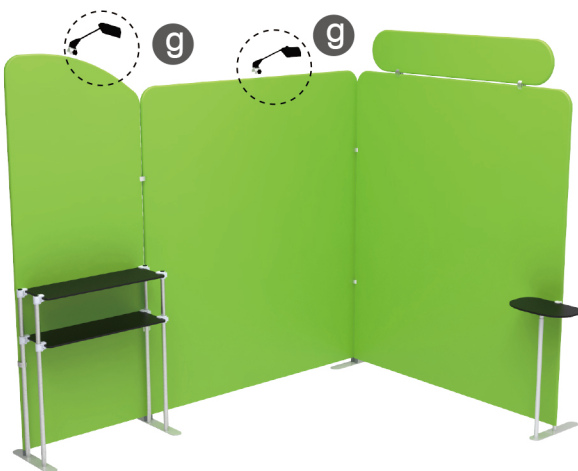
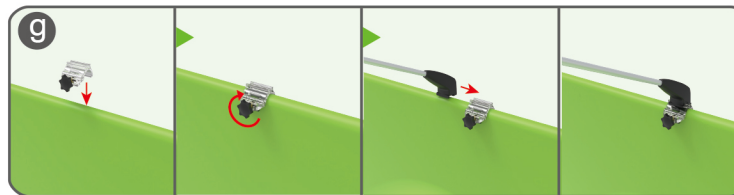
### STEP 04

Insert pole into base, screw clamp with hex wrench, place MDF board onto pole & insert into clamp with screw.



### STEP 05

Screw light clips at top of display stands, slide lights onto them and adjust their direction.



10X10FT-BOOTH-U