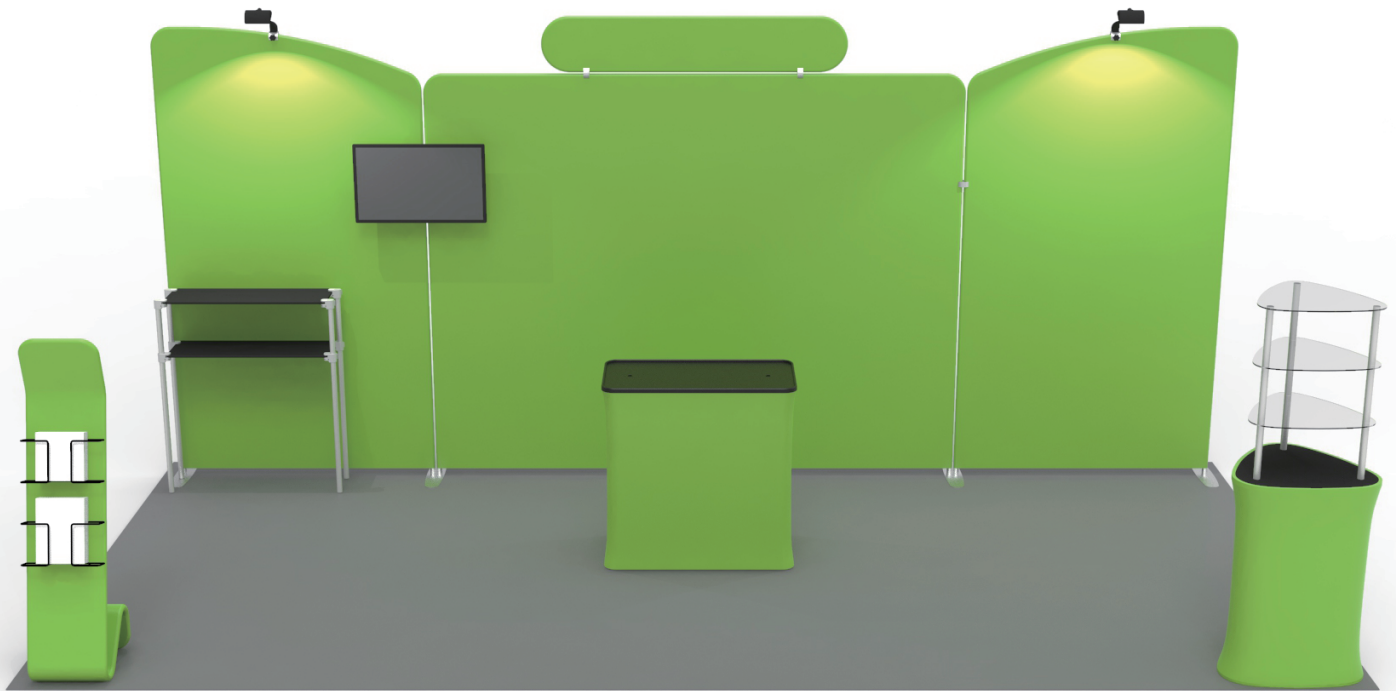


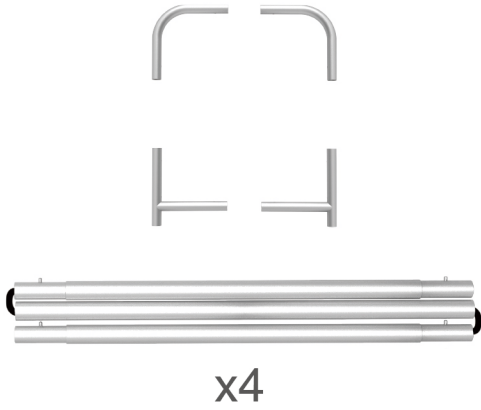
INSTRUCTION



10X20FT-BOOTH-H

STEPS

(1) Hardware

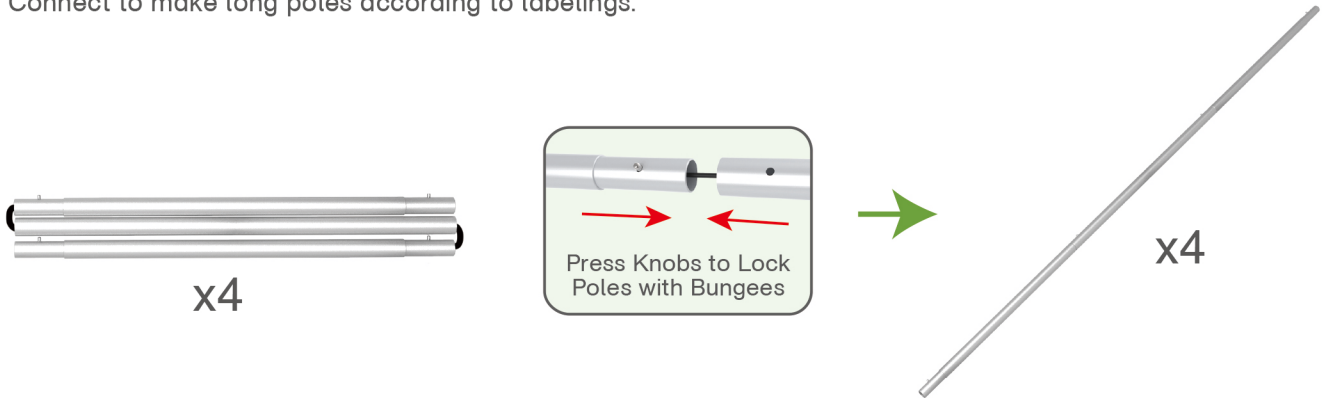


(2) Printed Graphic Fabric Banner (Optional)



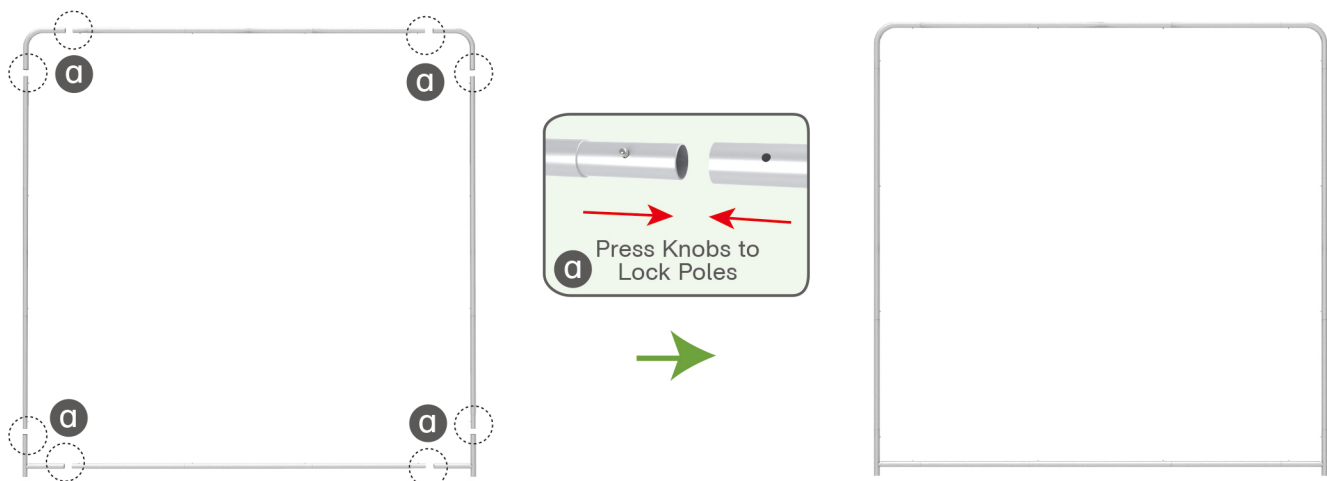
STEP 01

Connect to make long poles according to labelings.



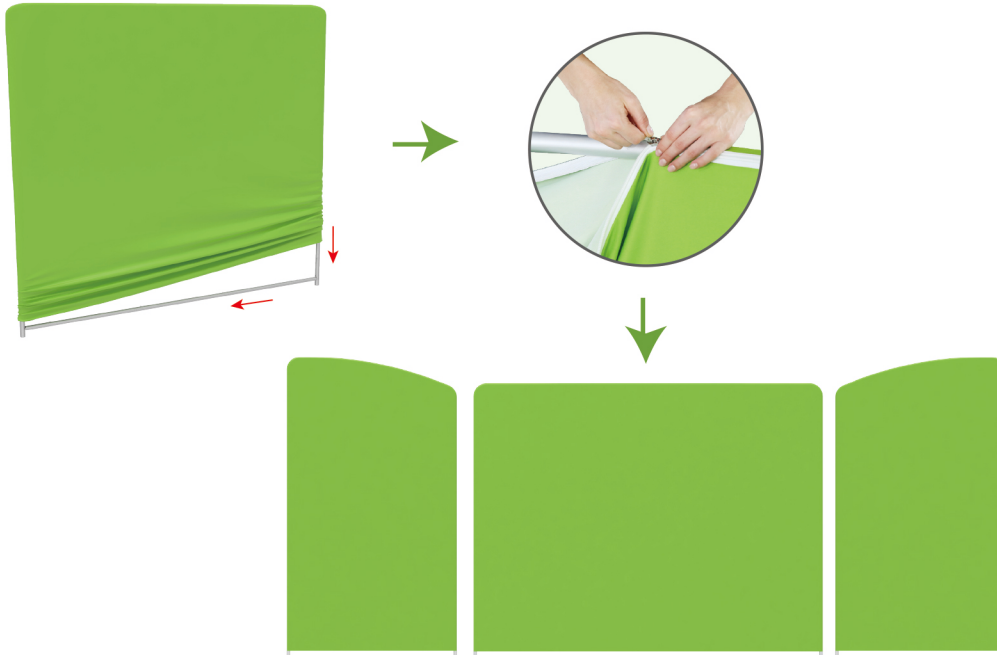
STEP 02

Connect long poles with corner poles according to labelings.



STEPS

STEP 03 Slide fabric banner on frame from top and zip up at bottom.



Same Steps for Other Display Stands

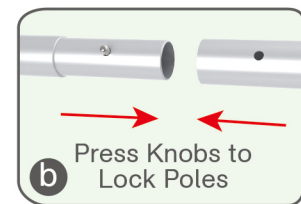
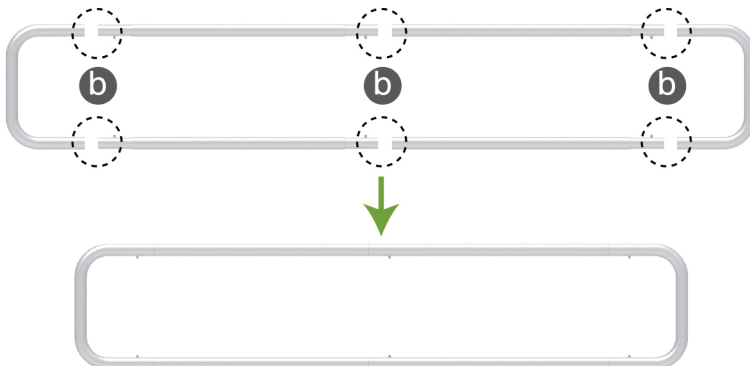
(1) Hardware



(2) Printed Graphic Fabric Banner (Optional)

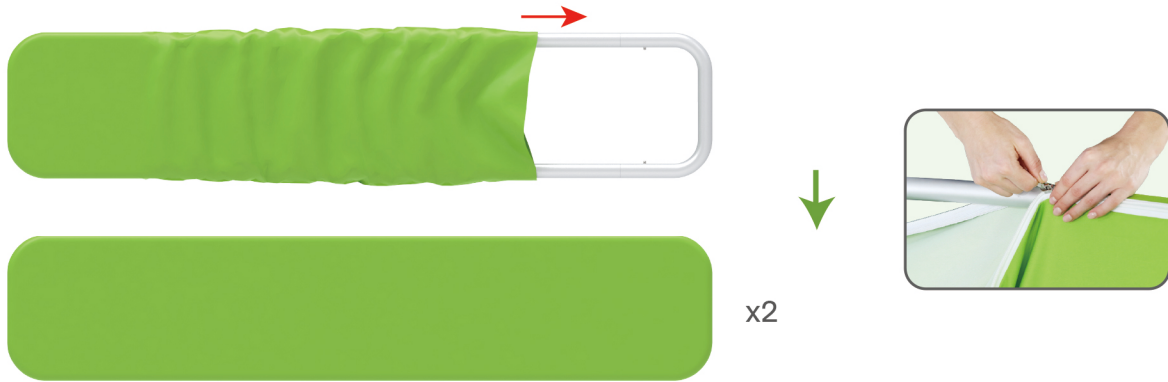


STEP 01 Connect poles according to labelings.



STEPS

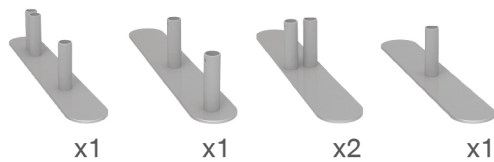
STEP 02 Slide fabric banner on frame from left and zip up at right.



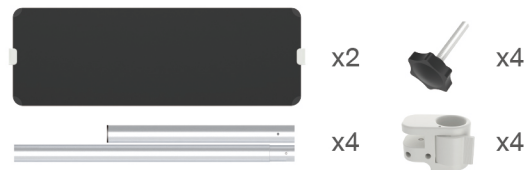
Booth Set Assembly



(1) Base



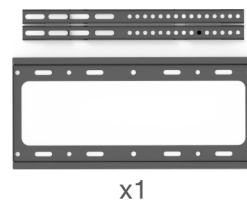
(2) Shelving Board



(3) LED Light & Clip



(4) TV Mount



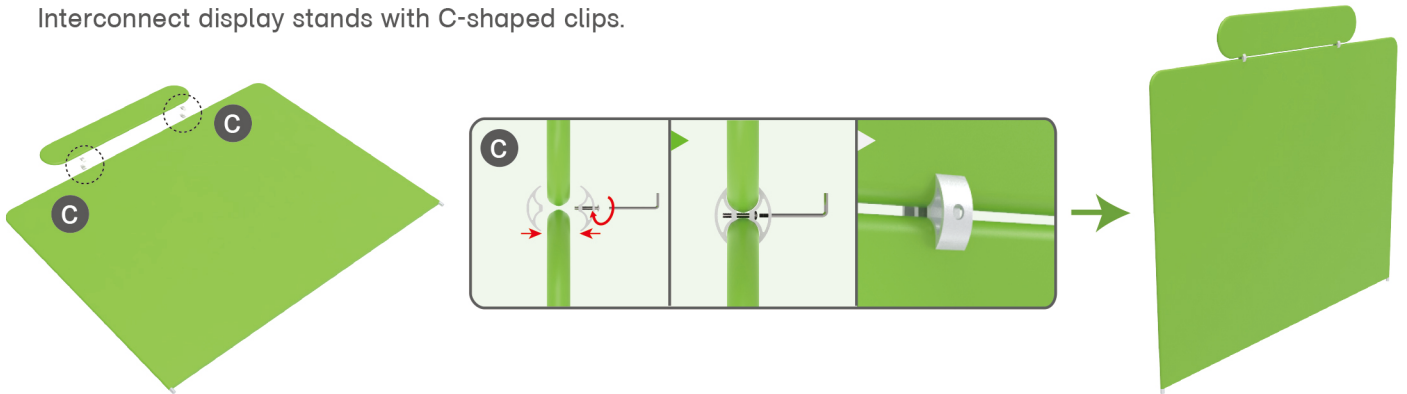
(5) 180° C-Shaped Clip & 90° C-Shaped Clip



STEPS

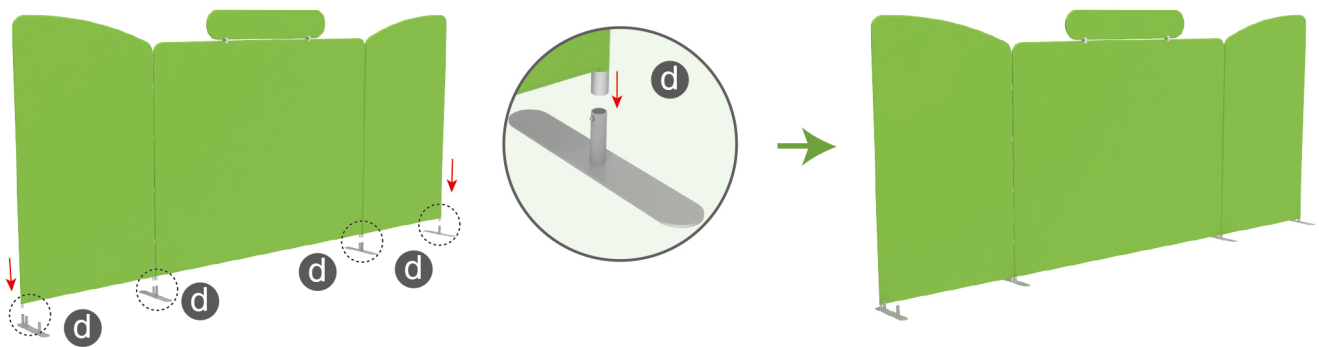
STEP 01

Interconnect display stands with C-shaped clips.



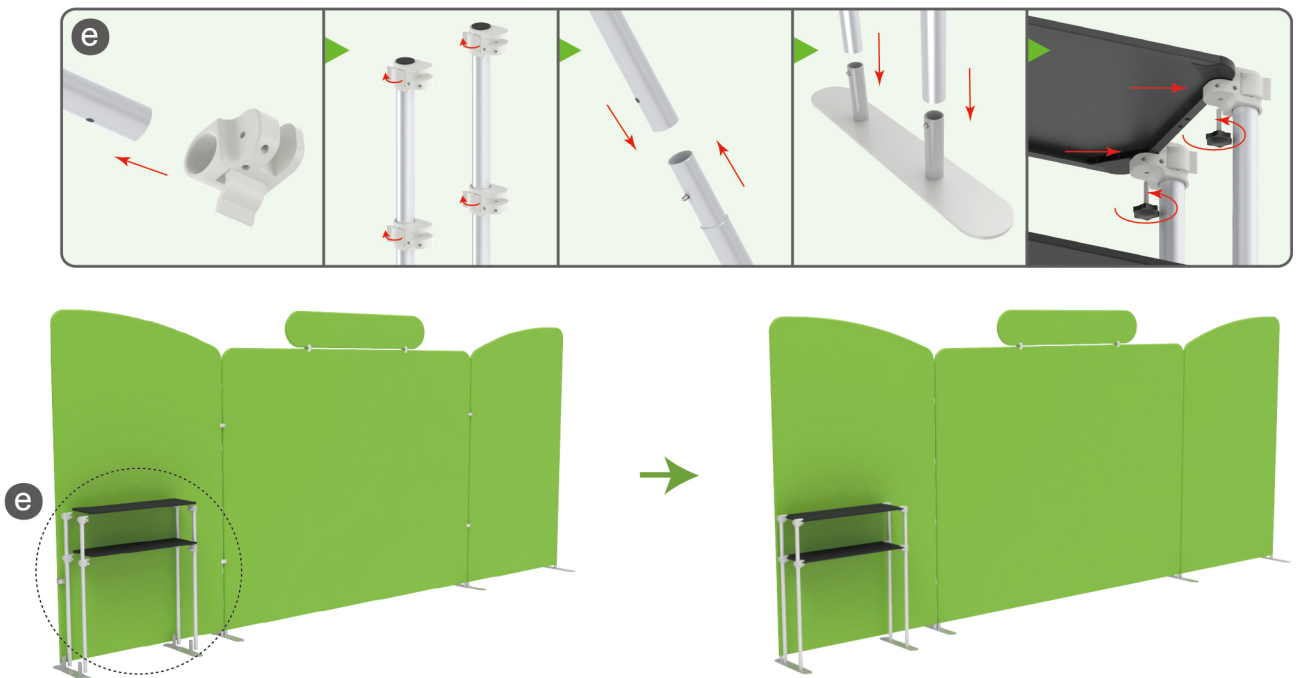
STEP 02

Insert display stands onto feet by pressing their knobs.



STEP 03

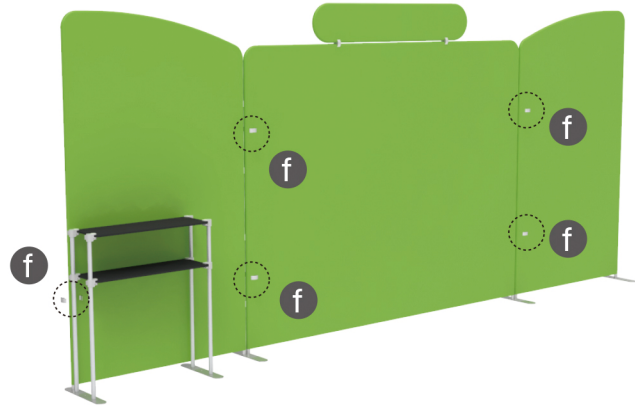
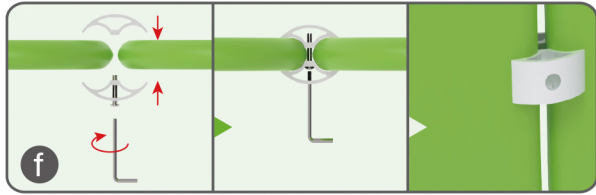
Install shelving boards in position.



STEPS

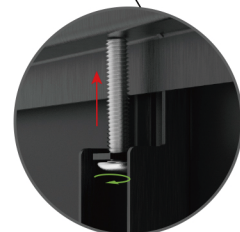
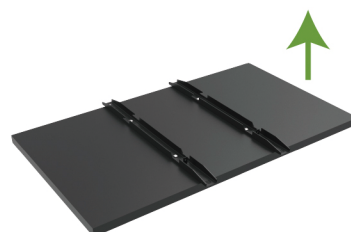
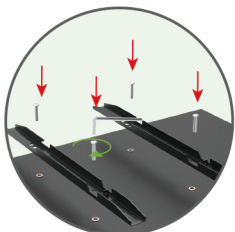
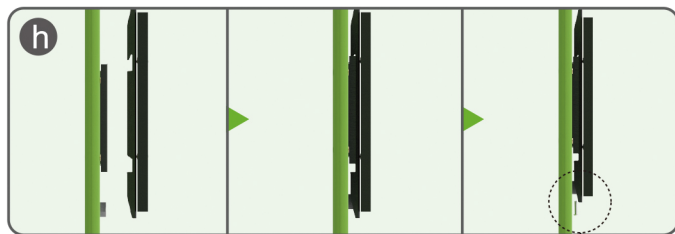
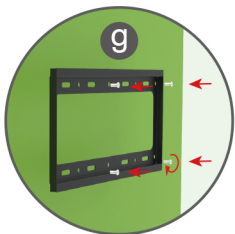
STEP 04

Interconnect display stands with C-shaped clips.



STEP 05

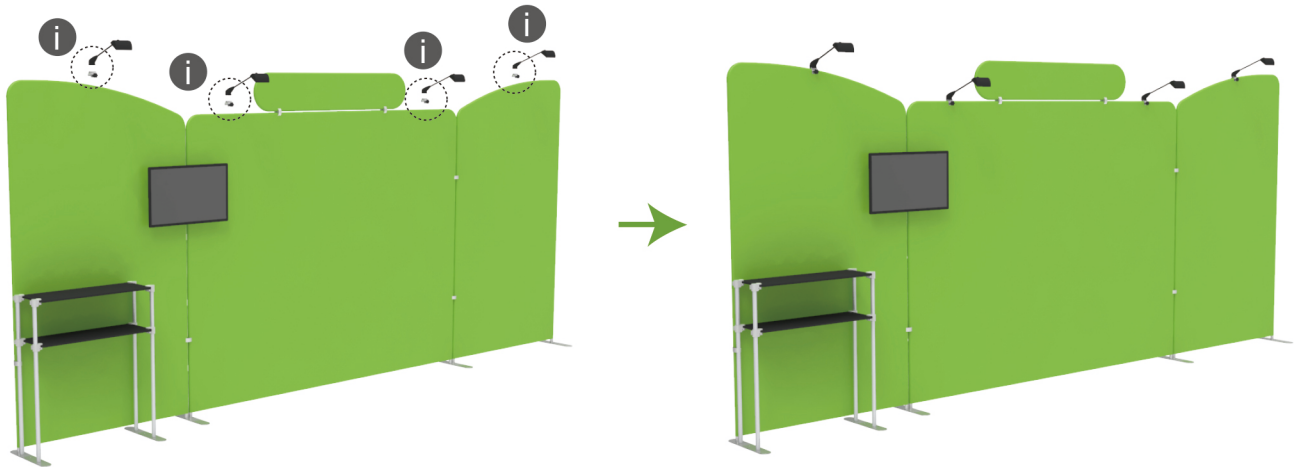
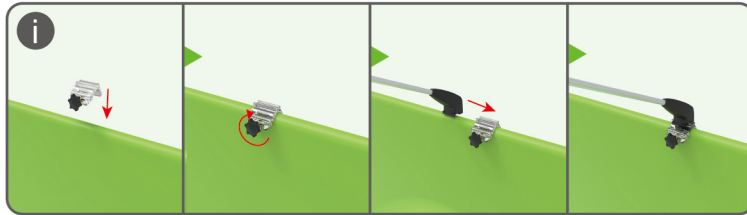
Screw TV mount with hex wrench.



STEPS

STEP 06

Screw light clips at top of display stands, slide lights onto them and adjust their direction.



10X20FT-BOOTH-H

STEPS

(1) Durable Plastic Hard Case, Aluminum Support Poles

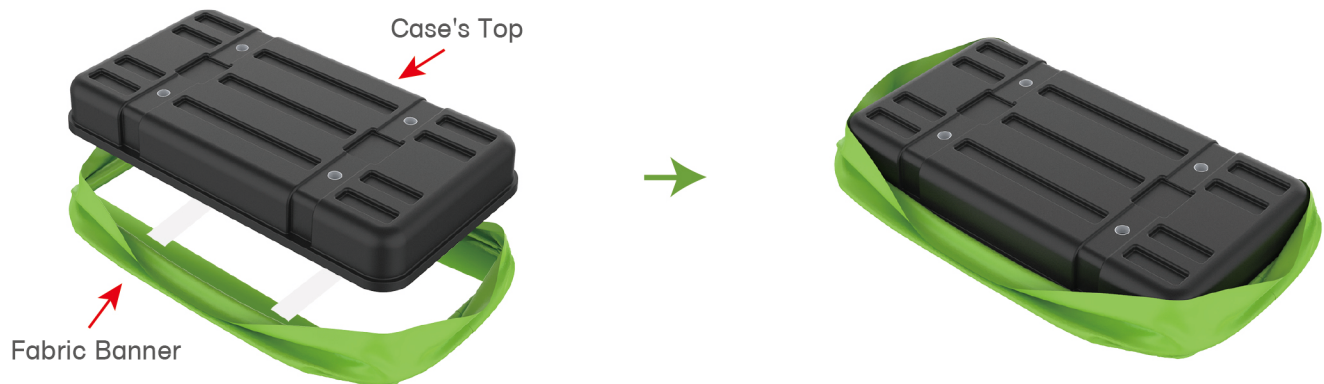


(2) Printed Graphic Fabric Banner



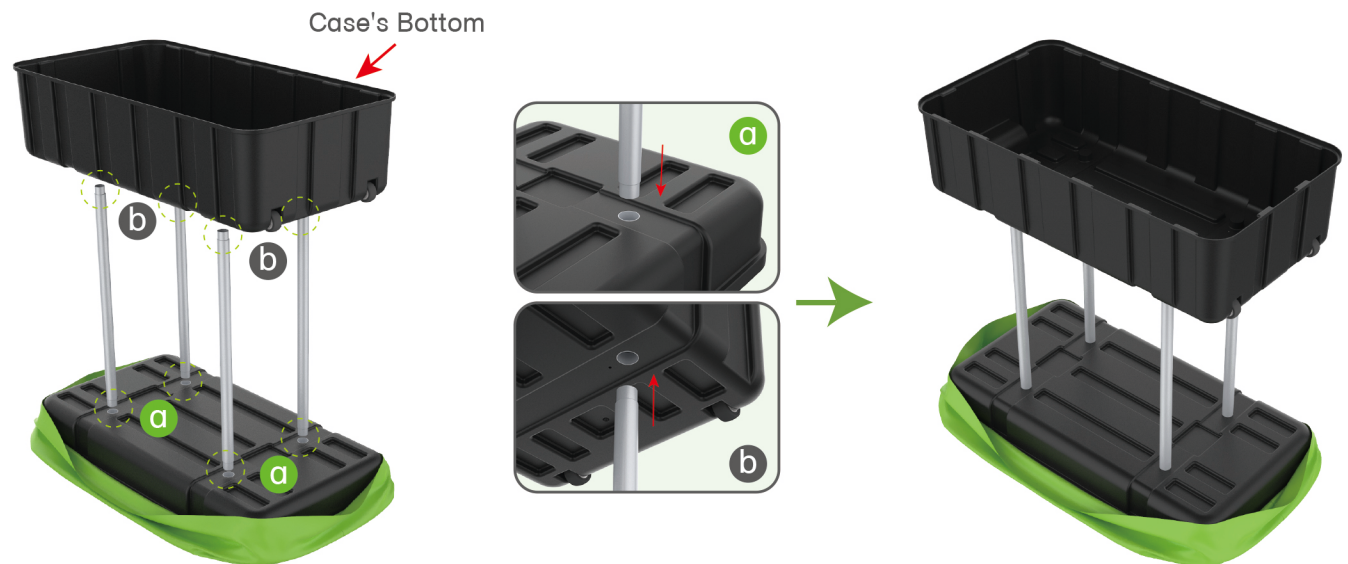
STEP 01

Put hard case's top into fabric banner.



STEP 02

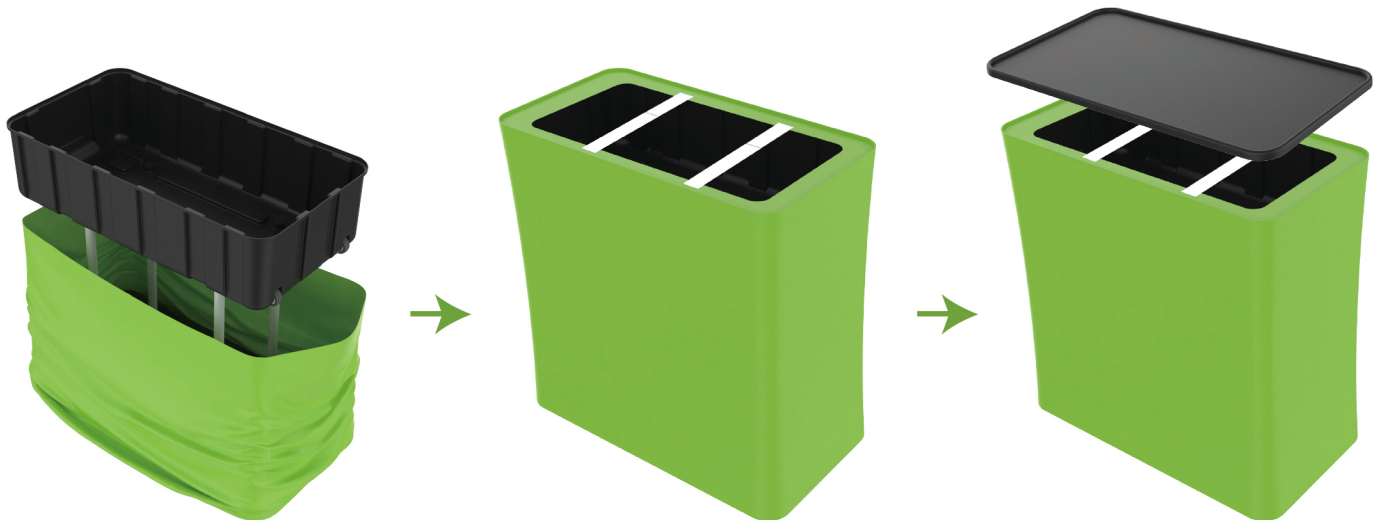
Insert support poles into hard case's top & bottom.



STEPS

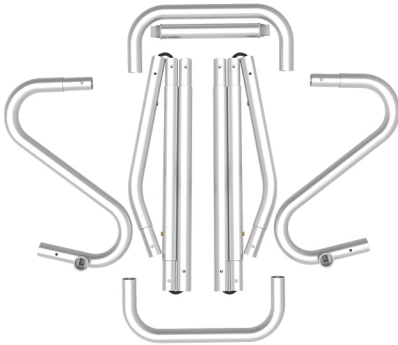
STEP 04

Wrap fabric banner from bottom to top & twist it to be smooth, lay hard case's intermediate panel on podium's top.



STEPS

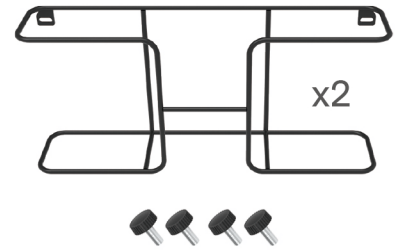
(1) Snap Tubes



(2) Printed fabric banner

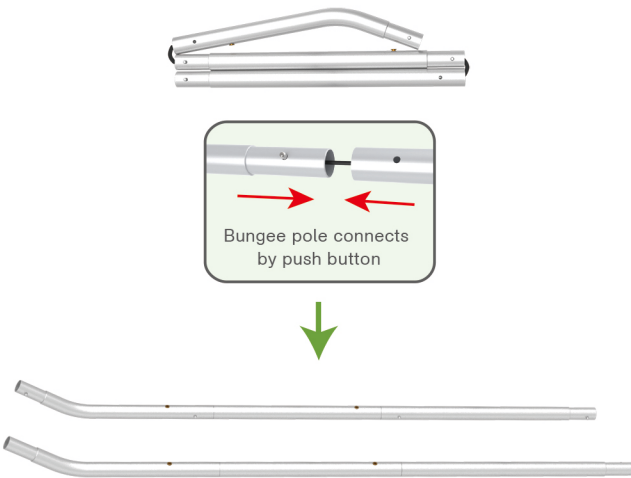


(3) Brochure rack x 2
Screws x 4



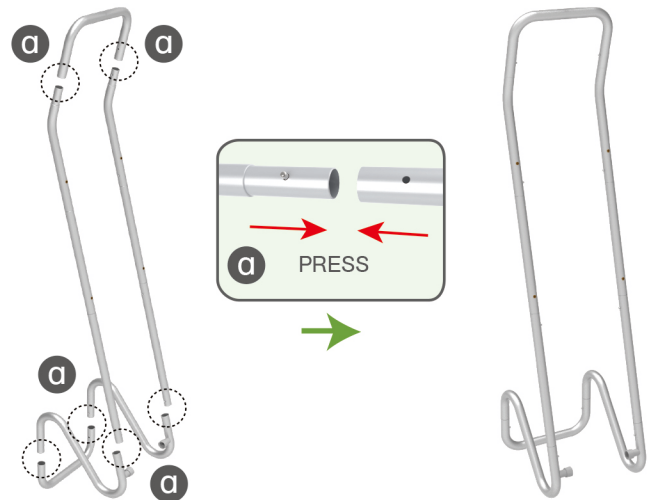
STEP 01

To Connect the tubes according to the labellings



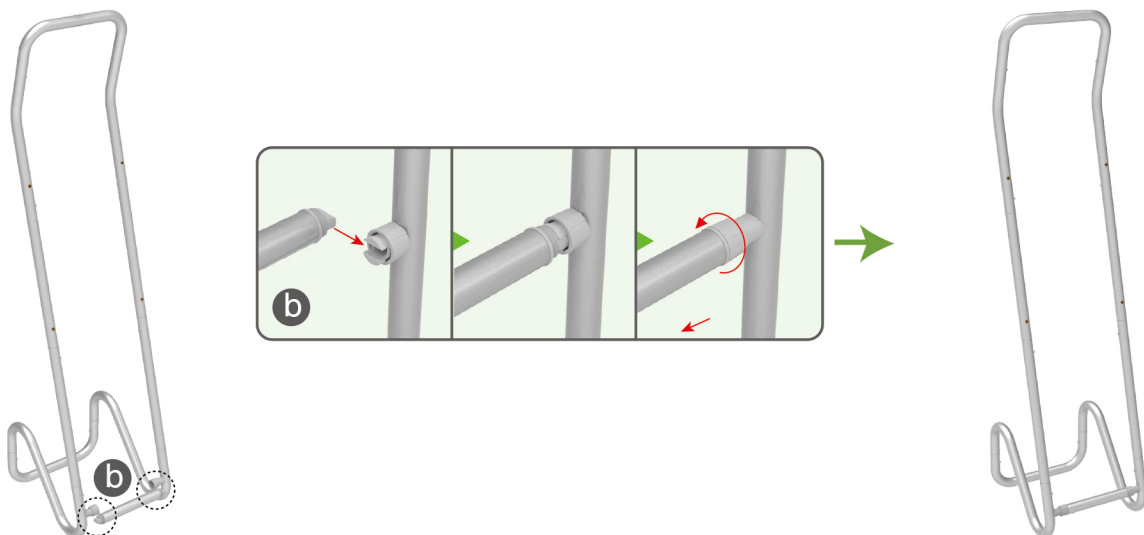
STEP 02

To connect 2 long side tubes by the corner pieces



STEP 03

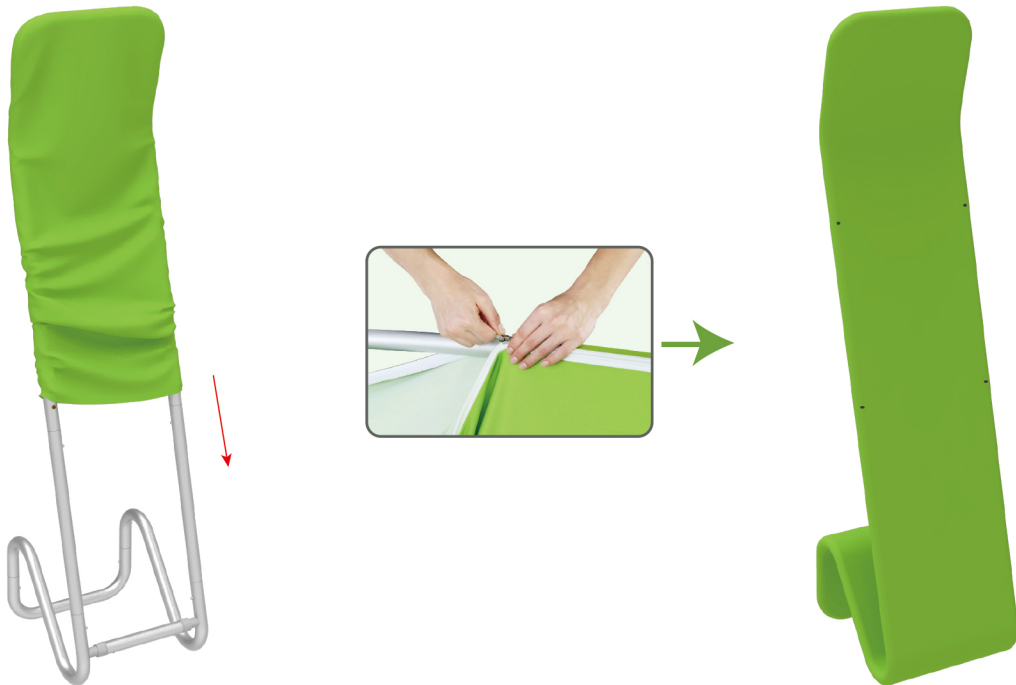
To install the cross bar according to labellings



STEPS

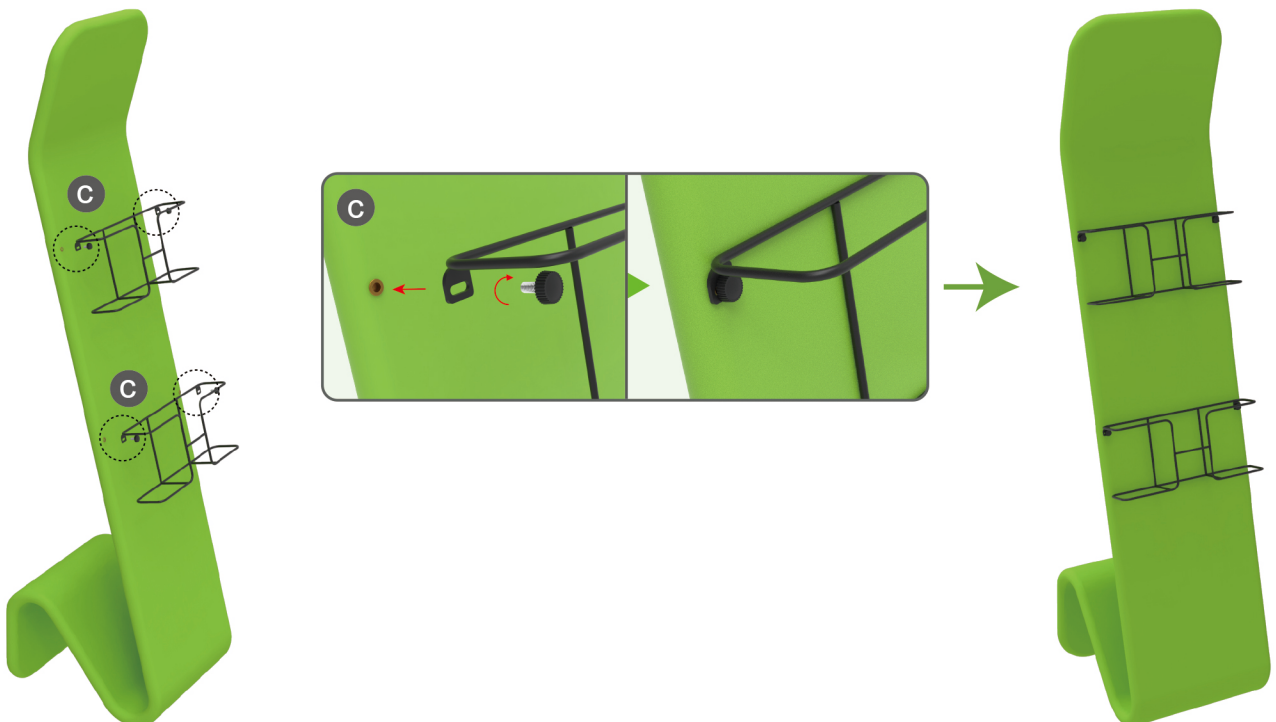
STEP 04

To Wrap up the fabric banner from top to bottom and zip up.



STEP 05

To install 2 racks by screws in position



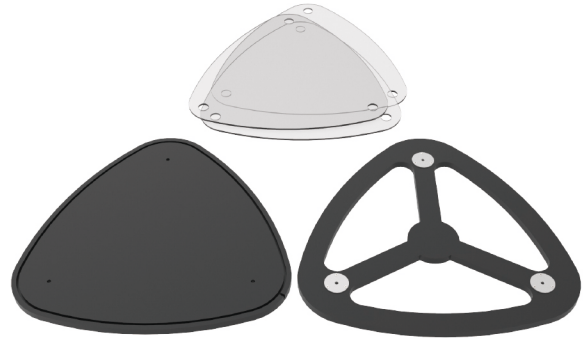
★ One Tool (Hex Wrench) 

STEPS

(1) Straight Support Poles



(2) Top MDF Board, Bottom MDF Board, Acrylic Boards

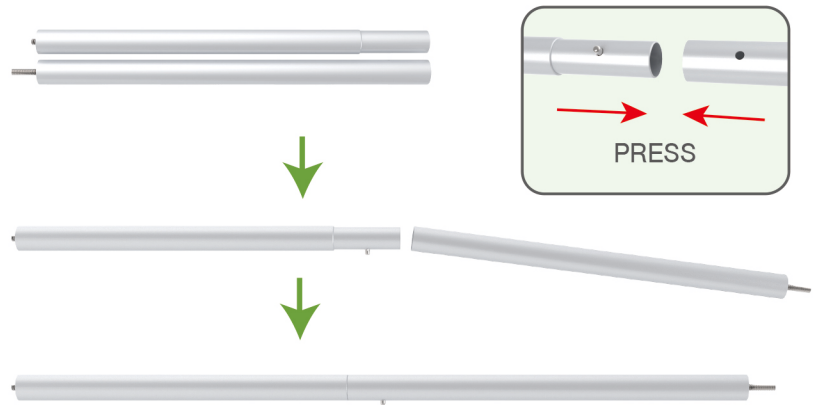


(3) Printed Graphic Fabric Banner



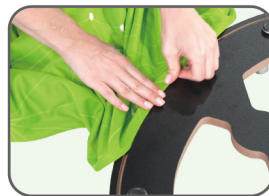
STEP 01

Connect straight support poles by pressing knobs to lock.



STEP 02

Insert fabric banner into bottom MDF board's slot and turn it over.



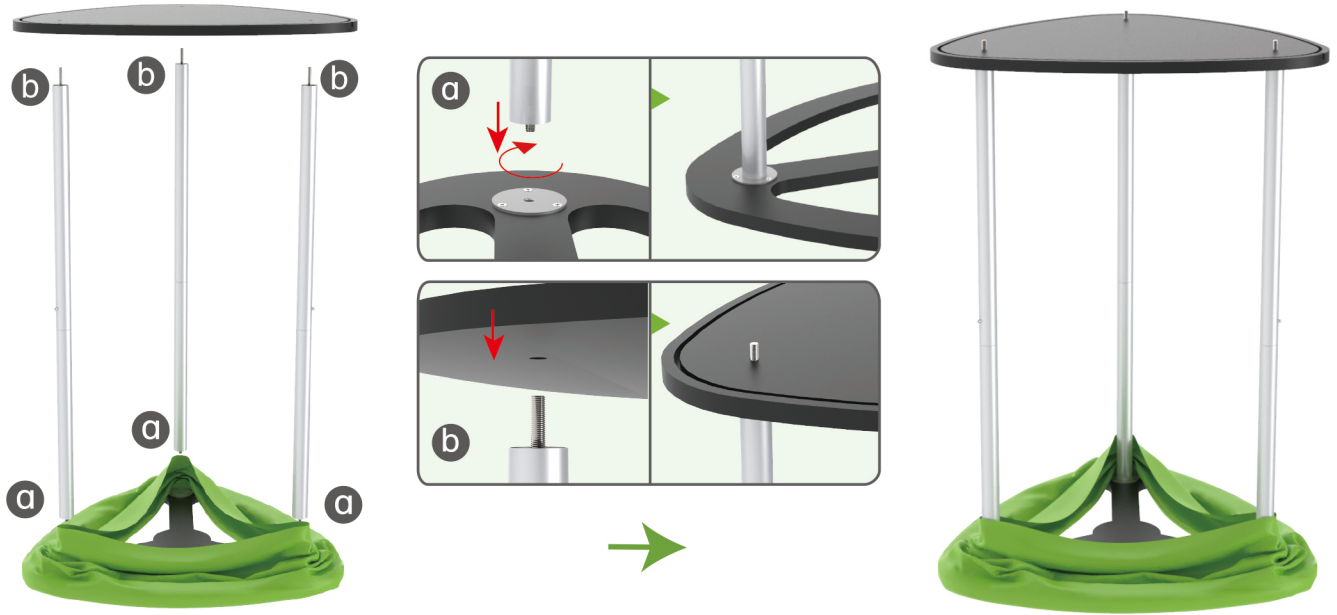
PRESS



STEPS

STEP 03

Screw straight support poles in bottom MDF board's threaded holes and place top MDF board on them.



STEP 04

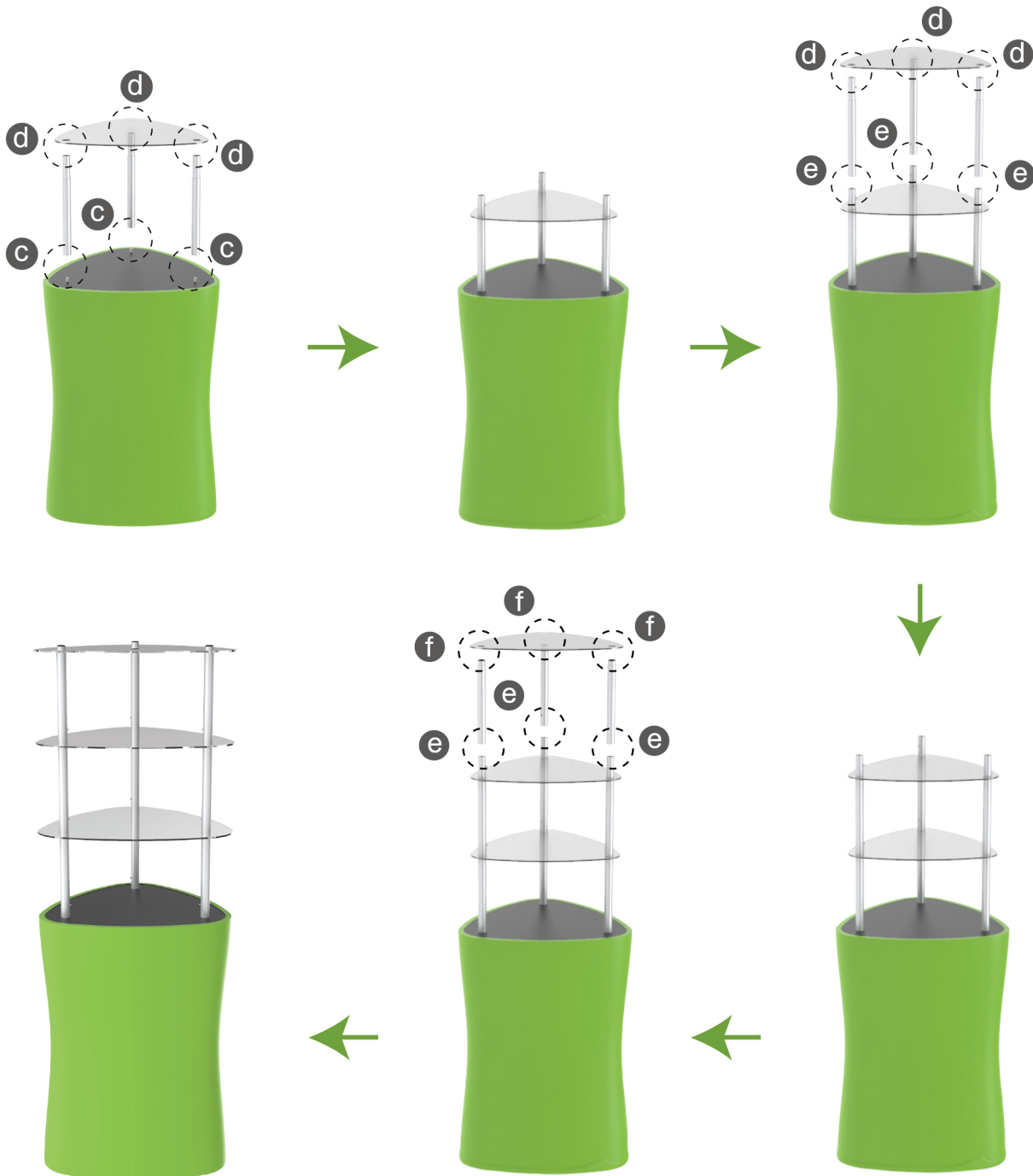
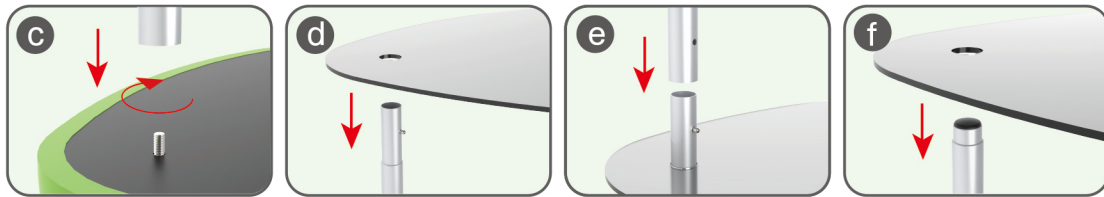
Pull fabric banner from bottom to top and insert into top MDF board's slot.



STEPS

STEP 05

Screw straight support poles with threaded holes filled onto nuts and place acrylic boards on them layer by layer.



STEPS



DT-S-02



DT-S-01



DT-S-03